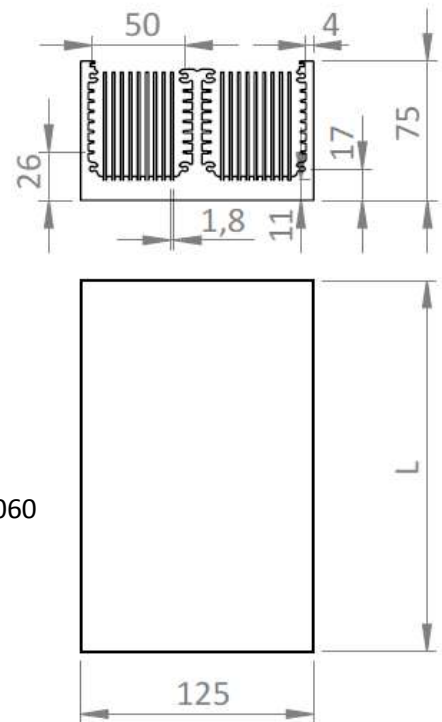
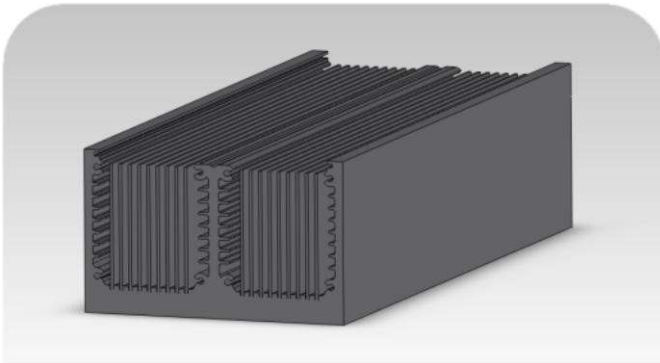




1) PTHIGH (h=75 mm) from extruded baseplate RMRES0045



Materials:

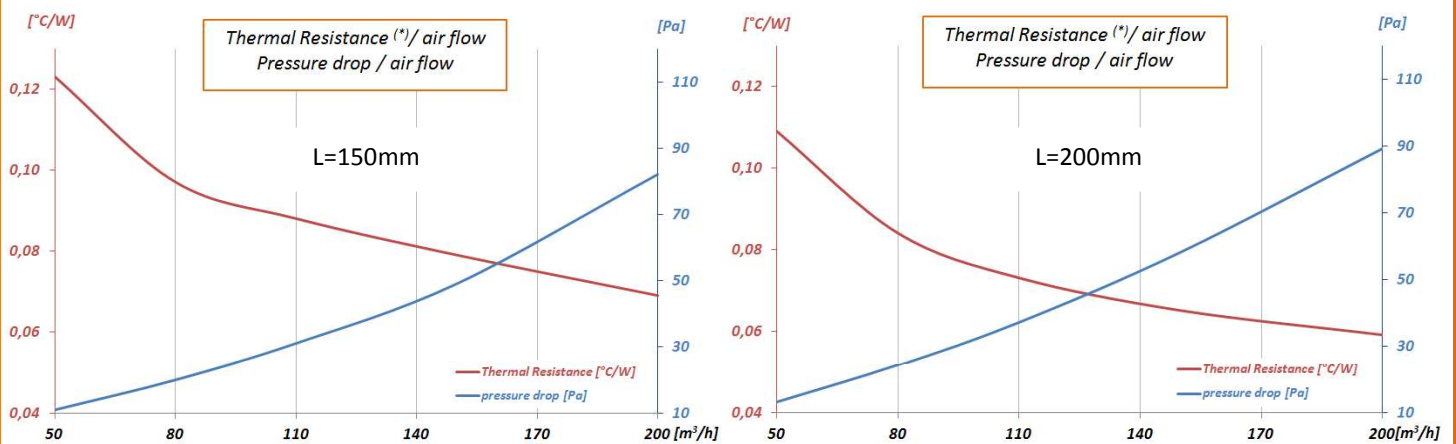
Fins: n° 18 ; thickness 1.5 mm; pitch =4.5 mm (Al EN AW1050)

Baseplate (+ n°3 extruded thicker fins) : Al Extruded alloy Al EN AW 6060

Working Conditions:

- $T_{in} = 40^{\circ}\text{C}$
- $P_d = 300\text{ W}$ uniformly distributed
- fully ducted ventilation

(*) Thermal Resistance: max T_{HS} surface to $T_{air IN}$ (@ 40°C)



Performances have been evaluated in function of different heat sink lengths "L" (see diagrams)

